

SMILE Teacher Newsletter

Volume 2 - Issue 8

April 6, 2023



Oregon State University
Precollege Programs



In This Issue

1. Spring Teacher Workshop
2. MS1 Challenge Pictures
3. Challenge Logistics

Quick Links

[Click Here for the 2023 Challenge Resources Google Drive Folder!](#)

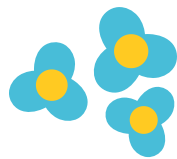
[Click Here to register for the Spring Teacher Workshop!](#)

[Click Here for 2023 Winter Teacher Workshop Materials!](#)

Upcoming Events

- Challenge Events Throughout April.
- Spring Teacher Workshop: May 11 - 13, at H.J. Andrews Experimental Research Forest.
- Summer Teacher Workshop: August 7 - 9, at OSU

[Check out our website:
smile.oregonstate.edu](http://smile.oregonstate.edu)



Spring Teacher Workshop

May 11 - 13, 2023

At H.J. Andrews Research Forest

Registration is open until Monday, April 24.
[Click Here](#) to register!

Join us for the 2023 Spring Teacher Workshop!

During this workshop, we'll engage in hands-on activities both indoors and out, and will reflect on the year in SMILE. There will be a Share Fair, where teachers can share a favorite activity with each other. We'll also have an awards ceremony to honor the efforts of SMILE teachers. This workshop will take place in a scenic forest setting. Lodging and meals are provided, and travel and sub costs will be covered. Please contact [Becca](#) or [Kami](#) with any questions. We look forward to spending time with you at the workshop!

2023 SMILE Leadership and Service Award -

Nominations are currently being accepted. SMILE teachers may nominate fellow SMILE teachers or may self-nominate. To receive this award, the individual must be a current SMILE Club teacher or advisor. The individual receiving the **SMILE Leadership and Service Award** should demonstrate:

- **Engagement in the SMILE teacher learning community** by participating in workshops, sharing best practices, and mentoring new SMILE teachers.
- **Exceptional service to their SMILE Club students**, by attending Challenge events, utilizing innovative activities, taking students on Club related field trips, and by achieving consistently high rates of student participation in Clubs.

Nomination letters may be submitted in Word or PDF documents, and sent via email. Send nominations to Kami Hammerschmith:

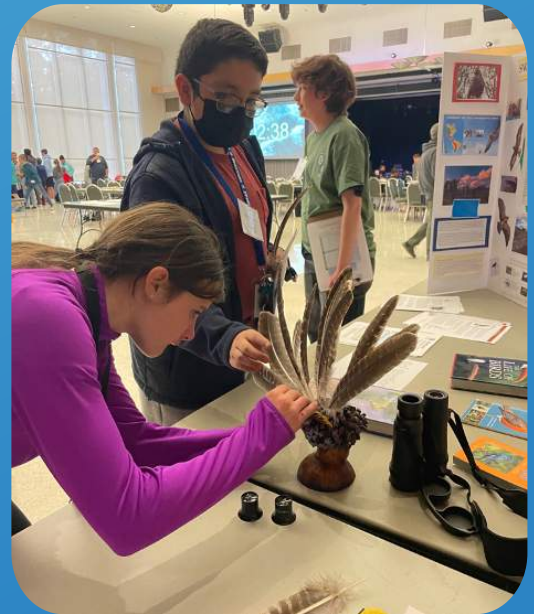
kami.hammerschmith@oregonstate.edu. Nominations are due on Friday, April 28. The award will be presented at the **Spring Teacher Workshop**. The recipient, or recipients, will receive \$300, a certificate, and their name will be added to the award plaque housed in the SMILE Program office at Oregon State University. If you have questions about this opportunity, please contact Kami at 541-737-0534.

MS1 Challenge Highlights



The first 2023 Challenge was a total blast!

Thank you to all of the students, teachers, and chaperones, from French Prairie MS, Seven Oak MS, and Valor MS, for making the first Challenge a huge success! *Your students are our favorite scientists.* From meeting new people, to working on creative STEM activities, touring college campuses, and staying in the dorms, we hope everyone made lasting memories to carry home with them.



Challenge Logistics

Challenge Logistics for Middle and High School Clubs

Day 1 -

On the first day of the Challenge, if your group arrives before 2 pm, you are welcome to take a self guided tour of Western Oregon University (WOU).

Buses park in Lot J at WOU.

2 pm at Lander's Lawn Tent - Dorm check-in and t-shirts

2:45 - 3:15 pm in the Werner Lobby outside the Pacific Room - Registration.

Kami will provide a detailed schedule for the day at registration, but let us know if you have any questions about the itinerary.

Day 2 -

In the am, clean and pack up (unless you're staying a second night), eat breakfast, and participate in activities until 10:30 am.

10:45 am at Lot J, WOU - Buses load and depart for OSU.

11:30 am at Memorial Union, OSU - Buses drop students of at OSU's Memorial Union, SEC Plaza area. Buses can check for parking along 26th St, outside of Gill Coliseum/Reser Stadium. If no parking is available, they can park at the Benton County Fairgrounds.

11:45 - 11:55 am at Memorial Union - Welcome

12 - 4 pm - in various locations - Lunch and activities throughout the day.

4:15 - 4:30 pm at the Memorial Union - Awards and load buses (same as drop off location). For those staying a second night in WOU dorms, your students will get dinner and be on campus at OSU, until loading buses at 7:30 pm to return to WOU. Your buses will depart from WOU the next morning.

Bedding:

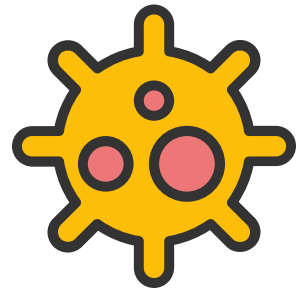
For those staying in the dorms at Western Oregon University, you and your students will be provided with a linen pack that includes: a pillow, blanket, two flat sheets, towel, and washcloth. No soap is provided.

ELEMENTARY CLUBS:

For elementary clubs attending the **Challenge at OSU, on April 15**, Becca will email you the timing/drop off logistics by the end of this week.

For elementary clubs attending the **Challenge at SOU, on April 22**, Becca will email you the timing/drop off logistics by the end of next week.

Contact Becca in the meantime if you have questions.



SMILE Program, Oregon State University
18 Gladys Valley Center, Corvallis, Oregon 97331
Phone: 541-737-0534
Email: SMILEprogram@oregonstate.edu
Copyright ©2021 Oregon State University
[Disclaimer](#)